

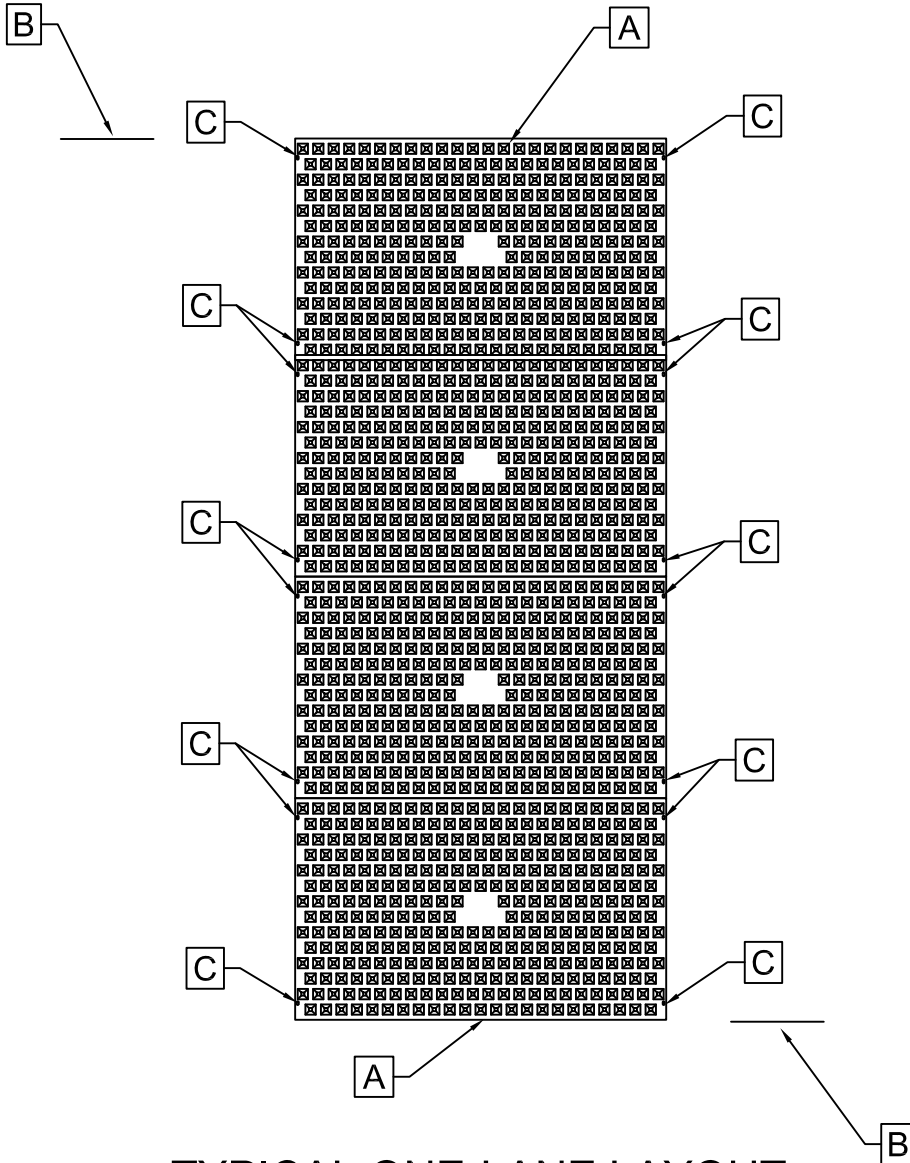


FOD PREVENTION MAT INSTALLATION

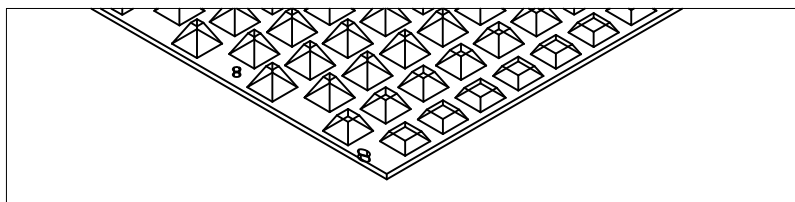
THE PURPOSE AND DESIGN OF THE FOD PREVENTION MAT IS TO EFFECTIVELY REMOVE FOD FROM THE TIRES OF AIRPORT MAINTENANCE VEHICLES AND OTHER VEHICLES PRIOR TO CROSSING OR ENTERING RUNWAY SURFACES. THIS DRAWING IS A GUIDELINE TO AID IN THE DESIGN, MODIFICATION, AND INSTALLATION OF A FOD PREVENTION MAT SYSTEM. THE INSTALLATION MAY NEED TO BE MODIFIED TO MEET EXISTING CONDITIONS, EXPECTATIONS, OR DEMANDS OF THE MOVEMENT, NON-MOVEMENT AND ROADWAY SYSTEM. ULTIMATELY, THE FOD PREVENTION SYSTEM SHOULD BE INSTALLED SAFELY WITH PROPER ANCHORING AND SIGNAGE COLLOCATED TO CAUTION USERS AND OTHERS OF AN UNEVEN SURFACE.

KEY NOTES:

- A. FODS - FOD PREVENTION MATS
- B. FOD SAFETY SIGN
- C. ANCHOR POINT



TYPICAL ONE-LANE LAYOUT



TAPERED PYRAMIDS FOR EASY ON-OFF TRANSITION

INSTALLATION:

1. ONCE THE SITE IS ESTABLISHED WHERE THE FOD PREVENTION MAT IS TO BE PLACED, THE INDIVIDUAL MATS CAN START TO BE PLACED INTO POSITION.
2. FOD MATS ARE DESIGNED TO BE INSTALLED IN A SERIES. THE MATS SHOULD BE INSTALLED TO SPAN THE WIDTH OF THE LANE.
3. AFTER THE FIRST MAT IS PLACED DOWN IN THE PROPER LOCATION, MATS SHOULD BE ANCHORED TO PREVENT THE POTENTIAL MOVEMENT WHILE IN USE. TYPICALLY BETWEEN 4 - 8 CONCRETE/ ASPHALT SCREW ANCHORS ARE NEEDED PER MAT TO SECURE THE MAT IN ITS CURRENT POSITION. CORNERS ARE RECOMMENDED ANCHOR POINTS.
4. SUCCESSIVE MATS CAN THEN BE PLACED TO CREATE THE FOD PREVENTION MAT SYSTEM REPEATING THE ABOVE STEPS.
5. FOD PREVENTION MATS SHOULD NOT INTERFERE WITH THE SAFETY AND MOVEMENT OF AIRCRAFT. FOD PREVENTION MATS SHOULD NOT BE INSTALLED ON TAXIWAYS, RUNWAYS, OR IN A LOCATION THAT WOULD BE IN THE PATH OF AIRCRAFT.

USE AND MAINTENANCE

1. VEHICLES SHOULD TRAVEL DOWN THE LENGTH OF THE FOD PREVENTION MAT SYSTEM.
2. MATS SHOULD BE CLEANED ONCE SUFFICIENT FOD BUILDS UP TO FILL THE VOIDS BETWEEN THE PYRAMIDS. THE FOD PREVENTION MATS MUST BE CLEANED WITH SUFFICIENT FREQUENCY SO THAT VEHICLE TIRES DO NOT COME IN CONTACT WITH FOD BUILT UP AT THE BASE OF THE PYRAMIDS. CLEANING SHOULD BE PERFORMED AFTER A STORM EVENT. BRUSHING IS THE PREFERRED METHOD OF CLEANING, EITHER MANUALLY OR MECHANICALLY.
3. THE USE OF ICE MELT, ROCK SALT, SNOW MELT, DE-ICER, ETC. SHOULD BE UTILIZED AS NECESSARY DURING THE WINTER MONTHS AND AFTER A SNOW EVENT TO PREVENT ICE BUILDUP.

*REMOVAL

1. IF FOD PREVENTION MATS NEED TO BE REMOVED, REMOVAL OF THE FOD PREVENTION MAT SYSTEM IS THE REVERSE ORDER OF INSTALLATION.
2. STARTING WITH THE LAST MAT IN THE SYSTEM, EACH SUCCESSIVE MAT SHOULD THEN BE MOVED AND STACKED FOR LOADING BY FORKLIFT ONTO A TRUCK FOR REMOVAL FROM THE SITE.