

Section 6

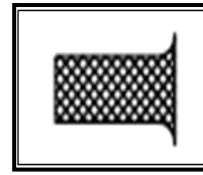
Tracking Control BMP

6.1 Tracking Control

Tracking control consists of preventing or reducing vehicle tracking from entering a storm drain or watercourse. Tracking control BMPs are shown in Table 6-1.

Table 6-1. Tracking Control BMPs	
ID	BMP Name
TC-1	Temporary Construction Entrance/Exit
TC-2	Temporary Construction Roadway
TC-3	Entrance/Outlet Tire Wash

The remainder of this section describe the working details for the tracking control BMPs.



Standard Symbol

BMP Objectives	
Soil Stabilization	<input checked="" type="checkbox"/>
Sediment Control	<input type="checkbox"/>
Tracking Control	<input checked="" type="checkbox"/>
Wind Erosion Control	<input checked="" type="checkbox"/>
Non-Stormwater Management	<input type="checkbox"/>
Materials and Waste Management	<input type="checkbox"/>

Definition and Purpose

A temporary construction entrance/exit is defined by a point of entrance/exit to a construction site that is stabilized to reduce the tracking of mud and dirt onto public roads by construction vehicles.

Appropriate Applications

Where dirt or mud can be tracked onto public roads.

Adjacent to water bodies.

Where poor soils are encountered.

Where dust is a problem during dry weather conditions.

Limitations

Site conditions will dictate design and need.

Limit the points of entrance/exit to the construction site.

Limit speed of vehicles to control dust.

Standards and Specifications

General Requirements

Temporary construction entrance/exit must comply with Standard Specification Section 13-7.03 Temporary Construction Roadways and Entrances.



Corrugated steel panels must be pressed or shop welded. They should have a slot or hook for coupling the panels together.

Class 8 RSP fabric shall be used to line temporary construction entrance/exit. Do not drive on the fabric until the rock is spread. Repair damaged fabric by placing new fabric over the damaged area with at least an 18-inch overlap on all edges.

Type A rock should be used for a Type 1 temporary construction entrance/exit. Type A rock must comply with Section 13-7.03B (2) of the Standard Specifications.

Type B rock should be used for a Type 2 temporary construction entrance/exit. Type B rock must comply with Section 13-7.03B (2) of the Standard Specifications.

Submit details for alternative construction entrances at least 5 business days before installation. This may include alternatives for the sump and corrugated steel panels or to eliminate the sump.

Installation

Prepare the location for the temporary construction entrance/exit as follows:

- Remove vegetation and clear debris.
- Grade the ground to a uniform plane.
- Remove sharp objects that could damage the fabric.
- Compact the top 1.5 feet of soil to at least 90 percent relative compaction.

Construct the temporary construction entrance/exit as follows (standard plans attached below):

- Place the fabric along the length of the construction entrance/exit.
- Overlap fabric ends by at least 12 inches.
- Cover the fabric with rock within 24 hours.
- Spread rock over the fabric in the direction of traffic.
- Keep a 6-inch layer of rock over the fabric to prevent damage from the spreading equipment.

For a Type 2 temporary construction entrance/exit, place rock under the corrugated steel panels. Use at least 6 corrugated steel panels for each entrance. Couple the panels together to prevent movement.

If a sump is used, install it within 20 ft of the temporary construction entrance/exit.

Other Considerations

Implement BMP SC-7, “Street Sweeping” as required under Section 13-4.03F and 13-7 of the Standard Specifications.

Require all employees, subcontractors, and suppliers to utilize the temporary construction entrance/exit. If the construction entrance/exit has metal plates as part of the BMP, all vehicles must be required to utilize them.

Route runoff from temporary construction entrances/exits through a sediment-trapping device before discharge.

Design a temporary construction entrance/exit to support the heaviest vehicles and equipment that will use it.



The use of asphalt concrete (AC) grindings is not allowed (high potential for leaching hydrocarbons) unless it complies with Section 6.8 of the 2016 Caltrans SWMP. Designate combination or single purpose entrances and exits to the construction site to maintain smooth flow of traffic.

Maintenance and Inspection

Inspect before and after each rainfall event, and weekly year-round.

Inspect immediate site access roads daily, implement SC-7, “Street Sweeping” as needed.

Remove aggregate, separate, and dispose of sediment if temporary construction entrance is clogged with sediment.

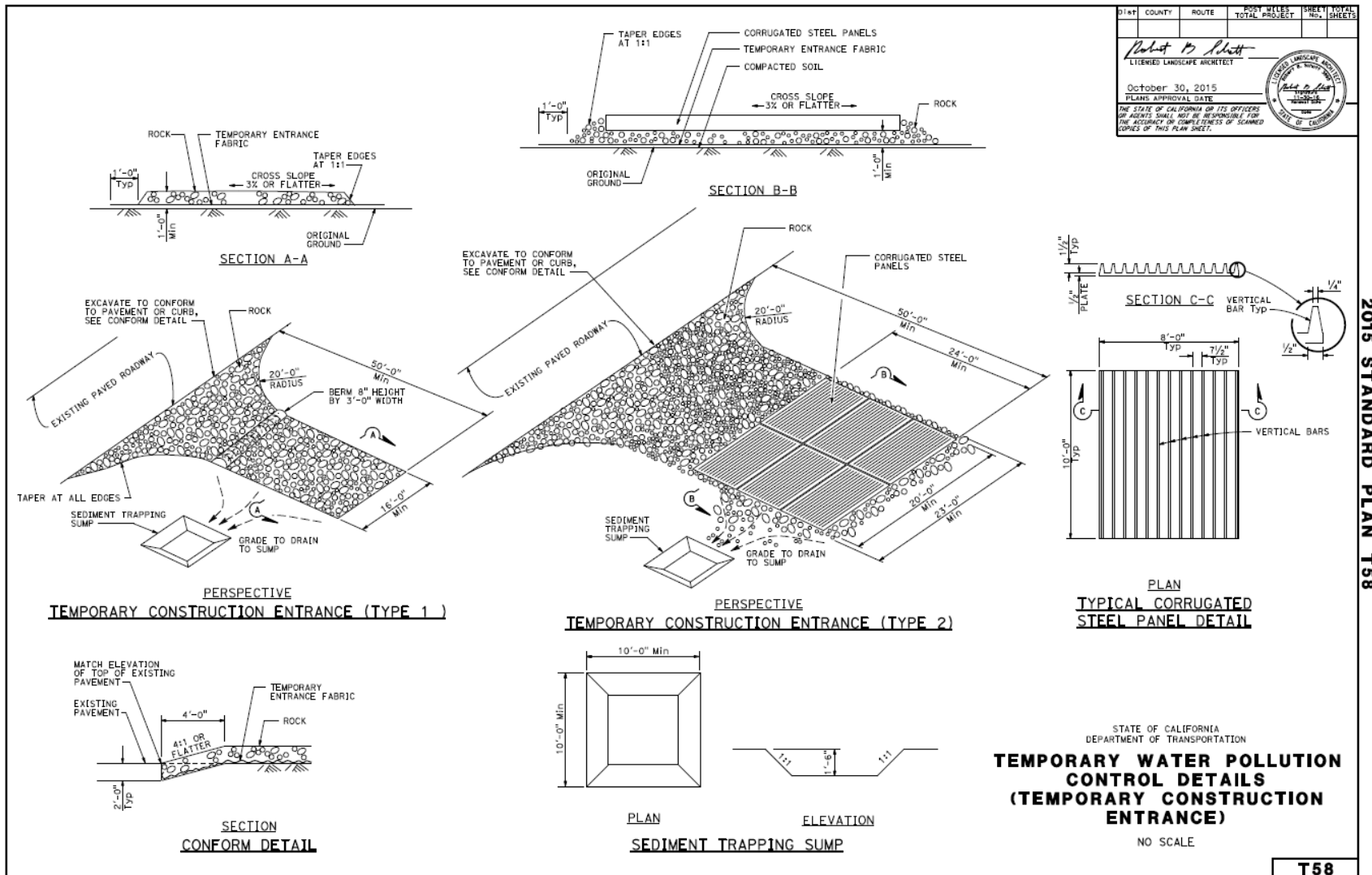
Keep all temporary construction entrance/exit ditches clear.

SWPPP or WPCP

Tracking Control BMPs are to be included and discussed in section 500.3.4 or Section 600.2 for SWPPP and Section 30.2.3 of the WPCP.

Temporary Construction Entrance/Exit

TC-1



2015 STANDARD PLAN T58

